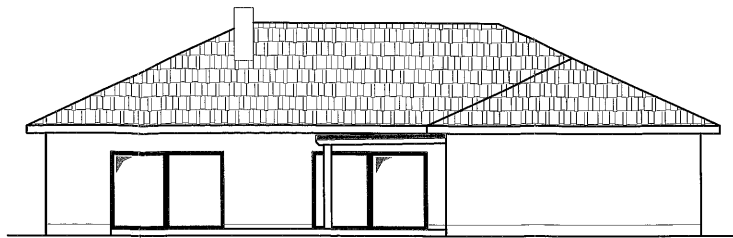


A line drawing of a single-story house. The house has a gabled roof with a chimney on the right side. The front facade includes a large garage door on the left, a small rectangular window above it, a set of three vertical windows in the center, a front door with a transom window, and another set of three vertical windows on the right. The drawing is simple, using black outlines and some light shading for the roof and garage door.

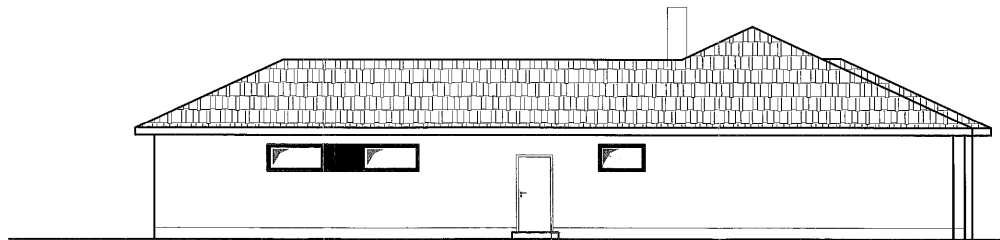
A line drawing of a house with a gabled roof, a chimney, a small square window, and a set of double doors. The house is shown from a side profile, with a chimney on the left side of the roof. The roof is covered in a pattern of small squares, suggesting shingles. The house has a small square window on the left and a set of double doors on the right. The drawing is simple and uses black lines on a white background.

		Kontakth. = 1 : 100	
Datum 18.08.15		Bewertung = Neubau eines EFH mit Garage	
Insitu =		Merkmal =	
GPR =			
		Bewertung = Ansichten Süd und West	
		Bild - Nr. =	

Nordansicht



Westansicht



Genehmigungsplanung

		Maßstab 1 : 100	
	Datum	Name	Beschreibung
proj.	18.05.15		Neubau eines EFH mit Garage
arch.			
gest.			
		Anfertigung	
		Ansichten Nord und Ost	
		Blatt - Nr. -	